



MONTHLY NATURE GOALS



BOOK LIST

NATURE STUDY TOPIC

LOCATIONS FOR NATURE WALKS

DATE

ACTIVITIES

NOTES

DATE

ACTIVITIES

NOTES

DATE

ACTIVITIES

NOTES

DATE

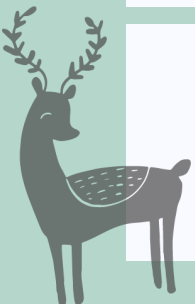
ACTIVITIES

NOTES

DATE

ACTIVITIES

NOTES



MONTHLY NATURE GOALS

BOOK LIST

NATURE STUDY TOPIC

LOCATIONS FOR NATURE WALKS

DATE

ACTIVITIES

NOTES

DATE

ACTIVITIES

NOTES

DATE

ACTIVITIES

NOTES

DATE

ACTIVITIES

NOTES

DATE

ACTIVITIES

NOTES

NATURE HOMESCHOOL WEEKLY GOALS

Month----- Season ----- Year -----

DAY 1 | MON

DAY 2 | TUE

DAY 3 | WED

DAY 4 | THU

DAY 5 | FRI

NATURE HOMESCHOOL WEEKLY GOALS

Month ----- Season ----- Year -----

DAY 1 | MON

DAY 2 | TUE

DAY 3 | WED

DAY 4 | THU

DAY 5 | FRI

Lesson Plan



MONDAY

TUESDAY

WEDNESDAY

THURSDAY

FRIDAY

NOTES

A faint, stylized illustration of a plant with three main stems and several leaves, rendered in a light gray color. The plant is positioned in the lower right quadrant of the page. It features a central stem with two large, elongated leaves at the top. To the left of the central stem is a shorter stem with several small, pointed leaves. To the right of the central stem is another stem with several small, pointed leaves. The overall style is simple and minimalist, with clean lines and no shading.



MY READING GROWTH

BOOK

DATE

BOOK

DATE

BOOK

DATE

BOOK

DATE

WELL DONE !

NOTES



WEEKLY GOALS



MONDAY

TUESDAY

WEDNESDAY

THURSDAY

FRIDAY

NOTES

